

MCVSD MIDDLE SCHOOL AUDITORIUMS - AUDITORIUM ELECTRICAL/RIGGING UPGRADES

WILSON AUDITORIUM 1301 48TH ST., MOLINE IL 61265
JOHN DEERE AUDITORIUM 2035 11TH ST., MOLINE IL 61265

SHEET INDEX

G000 - COVER SHEET
E000 - ELECTRICAL GENERAL INFORMATION
WE101 - WILSON AUDITORIUM ELECTRICAL PLAN
WE500 - WILSON ELECTRICAL SCHEDULES AND DETAILS
WR101 - WILSON STAGE RIGGING PLAN - ALTERNATE BID #1
JR101 - JOHN DEERE STAGE RIGGING PLAN - ALTERNATE BID #2



JOHN DEERE MIDDLE SCHOOL



WILSON MIDDLE SCHOOL



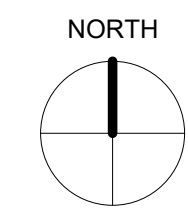
MCVSD MIDDLE SCHOOL AUDITORIUMS - AUDITORIUM ELECTRICAL/RIGGING UPGRADES

WILSON AUDITORIUM 1301 48TH ST., MOLINE IL 61265
JOHN DEERE AUDITORIUM 2035 11TH ST., MOLINE IL 61265

COVER SHEET

PROJECT NO: 3184442

G000



1/8" = 1'-0" 0 12

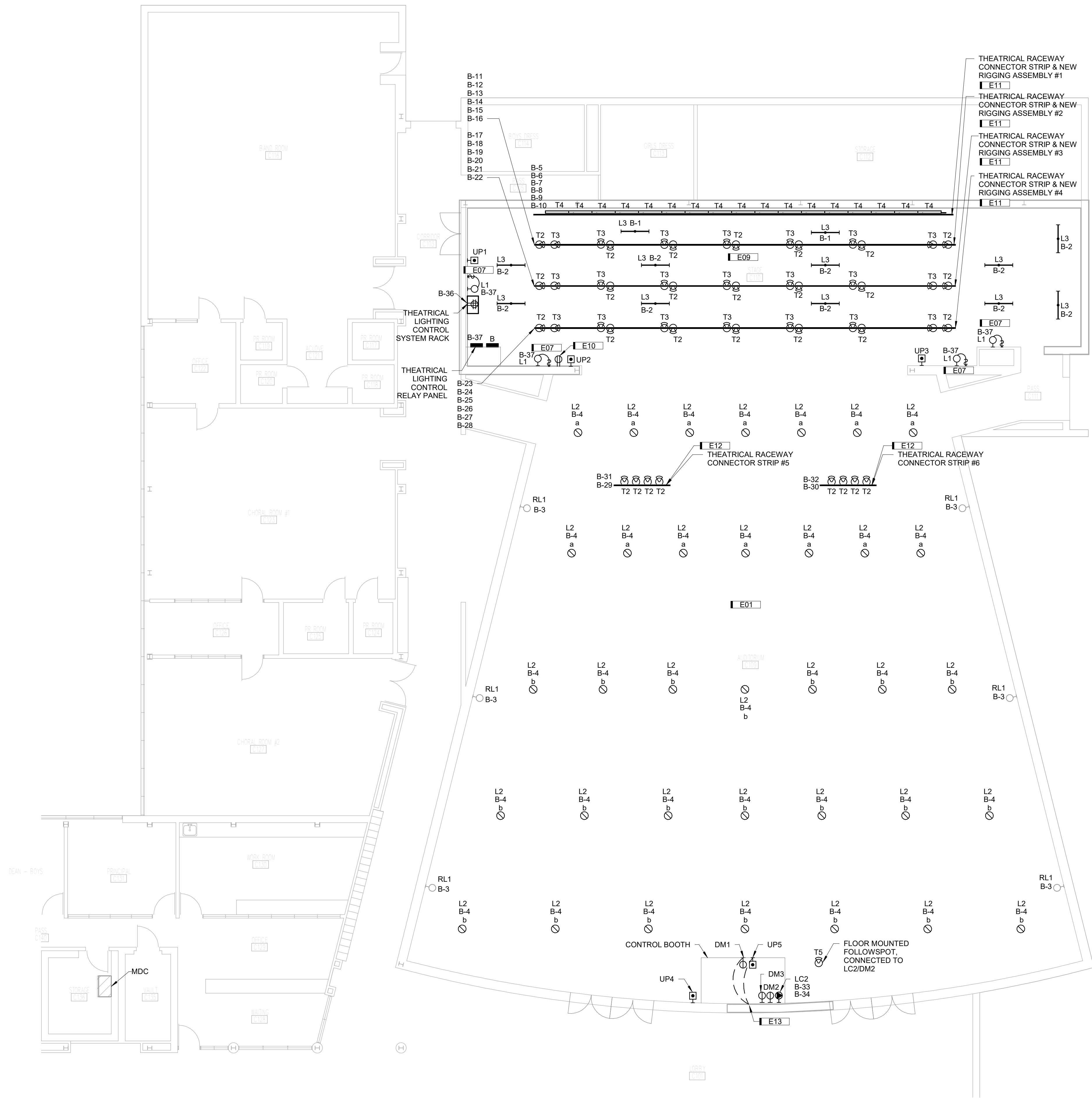
KEYNOTE LEGEND

	NOTE
E14	EXISTING STAGE PANEL SERVED FROM THIS DISTRIBUTION BOARD. CONTRACTOR TO CONFIRM EXISTING VES AND WIRING SIZE. CURRENTLY SERVING PANEL THEATRE. DESIGN ASSUMES 200A FEED. REPORT FINDINGS TO DESIGN.
E15	REFER TO RIGGING PLANS FOR DEMOLITION WORK.
ED01	REMOVE EXISTING THEATRICAL CONTROL SYSTEM INCLUDING HEADING CABINET. COME TO ASSOCIATED CABLING THROUGHOUT AUDITORIUM TO ALLOW FOR A NEW DMX CONTROL SYSTEM TO BE INSTALLED. EXISTING CONDUITS MAY BE REUSED FOR INSTALLATION OF NEW CABLING.
ED02	EXISTING SEATING AREA DOWNLIGHTS ACCESSED FROM CATWALK PLATFORMS ABOVE. EXISTING BRANCH CIRCUITS SHALL BE OPENING, DISCONNECT FROM NEAREST JUNCTION BOX, AND DISPOSE OF FIXTURE. REFER TO DETAIL 350050 FOR INSTALLATION DETAILS AND QUANTITY.
ED03	REMOVE EXISTING 250A PANELBOARD TO ALLOW FOR INSTALLATION OF NEW PANEL B. SALVAGE EXISTING FEEDER AND BRANCH CIRCUITS FOR NEW WORK. EXISTING BRANCH CIRCUITS SHALL BE RECONNECTED TO NEW PANEL B. FOR POWER SOURCE. SELECT CIRCUITS SHALL ALSO BE EXTENDED THROUGHOUT OF PANEL FOR CONTINUATION TO LOW VOLTAGE DISTRIBUTION. AUTOMATIC SWITCHING THROUGH RELAY PANEL/LIGHTING CONTROL SYSTEM. REFER TO NEW WORK SCHEDULE FOR ADDITIONAL WORK.
ED04	EXISTING SWITCH CONTROLS SEATING AREA WALL SCENES. AS PART OF NEW WORK, WALL SCENES WILL BE CONTROLLED THROUGH LIGHTING CONTROL SYSTEM WITH NO LINE VOLTAGE SWITCHING. MODIFY WIRING ACCORDINGLY.

1. ALL WORK SHALL BE IN CONFORMANCE WITH THE NATIONAL ELECTRICAL CODE - LATEST EDITION ADOPTED BY THE STATE, AND ALL APPLICABLE ORDINANCES AND REGULATIONS, THE COMPETENCES, AND THE AUTHORITY HAVING JURISDICTION. THE COMPLETE INSTALLATION SHALL BE IN ACCORDANCE WITH THE ADA REQUIREMENTS WITH DISABILITIES ACT ACCESSIBILITY GUIDELINES).
2. IT IS THE INTENT OF THESE DOCUMENTS TO COMPLY WITH THE APPLICABLE CODES, WHERE DISCREPANCIES OCCUR, NOTIFY THE ENGINEER/ARCHITECT IN WRITING FOR INTERPRETATION. THE CONTRACTOR SHALL BE RESPONSIBLE TO COMPLY WITH THE CODES AND STANDARDS AT NO ADDITIONAL COST TO THE OWNER.
3. THE CONTRACTOR SHALL PROVIDE ALL WORK NECESSARY INCLUDING ALL MATERIALS, LABOR, EQUIPMENT, TOOLS, ACCESSORIES, HARDWARE, AND COST FOR INSTALLATION FOR A COMPLETE AND OPERATIONAL SYSTEM.
4. ALL MATERIALS FURNISHED BY THE CONTRACTOR SHALL BE NEW COMPLETE WITH MANUFACTURER'S GUARANTEE OR WARRANTY AND SHALL BE TESTED BY A NATIONALLY RECOGNIZED TESTING LABORATORY (NRTL).
5. COORDINATE ELECTRICAL INSTALLATION WITH ALL TRADES PRIOR TO INSTALLATION. IF ELECTRICAL WORK INSTALLED INTERFERES WITH OTHER TRADES AFTER INSTALLATION, THE CONTRACTOR SHALL BE RESPONSIBLE FOR MAKING THE ACTUAL CORRECTIONS. THE CONDITION AT NO ADDITIONAL COST TO THE OWNER.
6. DEVICES, OUTLETS, AND JUNCTION BOXES SHOWN ON DRAWINGS ARE DIAGRAMMATIC. COORDINATE EXACT PLACEMENT OF ALL DEVICES WITH OWNER PRIOR TO INSTALLATION. VERIFY DOOR AND WINDOW SCHEDULES PRIOR TO INSTALLATION. VERIFY LOCATION OF LOCATION PRIOR TO INSTALLATION, SHALL BE DONE WITH NO ADDITIONAL COST TO THE OWNER.
7. DRAWINGS ARE DIAGRAMMATIC. ALL DIMENSIONS SHOWN ARE THEORETICAL. THE CONTRACTOR SHALL BE RESPONSIBLE FOR THE MODULAR FURNITURE, AND EQUIPMENT LOCATIONS WITH ARCHITECTURAL PLANS, ELEVATIONS AND REVIEWED SHOP DRAWINGS. PRIOR TO MAKING THE ACTUAL ELECTRIC INSTALLATION THIS CONTRACTOR SHALL ADJUST CONNECTION LOCATIONS TO ACCOMMODATE FURNITURE AND/OR EQUIPMENT.
8. ALL ELECTRICAL PANELS WITH ANY BRANCH CIRCUIT LOAD REVISIONS (DEMOLITION OR NEW WORK) SHALL HAVE A NEW ELECTRICAL PANEL CREDIT DIRECTORY CARD INSTALLED INSIDE THE DOOR OF THE ELECTRICAL PANEL. THE CONTRACTOR SHALL VERIFY THAT ALL UNUSED CIRCUIT BREAKERS ARE TURNED OFF AND THE PANEL IS INDICATED AS SUCH ON THE CREDIT DIRECTORY CARD. THE CONTRACTOR SHALL INSTALL FILLER PLATES WHERE BREAKERS ARE REMOVED AS PART OF THIS PROJECT OR HAVE BEEN REMOVED PREVIOUSLY.
9. NO PROJECTED CONDUCTORS SHALL BE EXPOSED ANYTIME THE ELECTRICAL PANEL AREA IS UNDER THE SUPERVISION OF A QUALIFIED ELECTRICIAN.
10. PENETRATIONS THROUGH FIRE RATED WALLS BY DIVISION 26 CONTRACTOR SHALL BE SEALED WITH APPROPRIATE FIRE PROOFING MATERIAL TO RESTORE FIRE RATING.
11. THE CONTRACTOR SHALL KEEP THE WORK AREA CLEAN OF ALL DEBRIS. THE DAILY WORK AREA SHALL BE KEPT AVAILABLE FOR THE INSTALLATION. SHALL BE KEPT IN AREAS DESIGNATED BY THE OWNER.
12. THESE DRAWINGS SHALL NOT BE SCALED TO OBTAIN DIMENSIONS. REFER TO DIMENSIONED ARCHITECTURAL FLOOR PLANS AND ELEVATIONS FOR DIMENSIONS. FOR INFORMATION GIVEN, CONTRACTOR SHALL CONTACT THE ENGINEER FOR ADDITIONAL INFORMATION.
13. PERIODIC SITE OBSERVATION BY THE ENGINEER IS SOLELY FOR THE PURPOSE OF DETERMINING IF THE WORK OF THE CONTRACTOR IS PROGRESSING AS SHOWN ON THE DRAWINGS. THE CONTRACT DOCUMENTS, THIS LIMITED SITE OBSERVATION SHOULD NOT BE CONSTRUED AS EXHAUSTIVE OR CONTINUOUS INSPECTION OF THE QUALITY OF THE WORK. THE ENGINEER'S RATHER PERIODIC IN AN EFFORT TO GUARD THE OWNER AGAINST DEFECTS OR DEFICIENCIES IN THE WORK OF THE CONTRACTOR.
14. THE INFORMATION CONTAINED ON THE ELECTRICAL DRAWINGS IS IN ITSELF INCOMPLETE AND VOID UNLESS IN CONJUNCTION WITH THE FOUR (4) CONTRACT DOCUMENTS, INCLUDING THE TRADE PRACTICES, OR APPLICABLE STANDARDS, CODES, ETC. AND SHALL BE CONSIDERED THE CONTRACT DOCUMENTS AND SHALL BE GOVERNED BY THEM. THE CONTRACTOR'S OWN OR CERTAIN KNOWLEDGE OF SIGNING THE CONTRACT.
15. CONTRACTOR IS TO ASSUME FULL RESPONSIBILITY. UNREVIEWED BY REVIEW OF SHOP DRAWINGS OR PERIODIC OBSERVATION OF THE WORK FOR DISCREPANCIES. THE CONTRACTOR SHALL BE CORRELATED ON THE JOB SITE AND BETWEEN INDIVIDUAL TRADES. THE CONTRACTOR SHALL BE RESPONSIBLE FOR THE PROCESSES AND CONSTRUCTION TECHNIQUES (INCLUDING EXECUTION, SHORING, SCAFFOLDING, BRACING, ERECTION, ETC.), FOR THE QUALITY OF THE WORK, THE WORKMANSHIP, TRADES, AND FOR SAFE CONDITIONS ON THE JOB SITE. VARIATIONS IN FIELD CONDITIONS RELATIVE TO THE CONTRACT DOCUMENTS SHALL BE THE RESPONSIBILITY OF THE CONTRACTOR. WHEN THEY ARE FOUND, WORK SHALL NOT PROGRESS UNTIL WRITTEN PERMISSION FROM THE ENGINEER IS OBTAINED.
16. ALL CONDUIT PATHWAYS REQUIRED TO BE ROUTED WITHIN AUDITORIUM SEATING AREA SHALL BE ROUTED CONCEALED WITHIN THE WALLS WITH SUFFICIENT CLEARANCE FROM THE BETWEEN DEVICE LOCATION AND DIRECT PATH TO ABOVE CEILING. CUTTING AND PATCHING OF EXISTING CONDITIONS SHALL BE THE RESPONSIBILITY OF THE CONTRACTOR.
17. THEATRICAL LIGHTING FIXTURES SHALL BE MOUNTED BY ELECTRICAL CONTRACTOR PER OWNER'S DIRECTION AND IN COMPLIANCE WITH MANUFACTURER'S INSTRUCTIONS.
18. EXISTING THEATRICAL LIGHTING CONTROL SYSTEM COMPONENTS AND CABLEING SHALL BE REMOVED IN THEIR ENTIRETY.
19. THE CONTRACTOR SHALL BE RESPONSIBLE FOR THE EXISTING RACEWAYS, UNLESS NOTED OTHERWISE TO PROVIDE NEW.

WILSON AUDITORIUM 1301 48TH ST., MOLINE IL 61265
JOHN DEERE AUDITORIUM 2035 11TH ST. MOINE IL 61265

E000



B6 WILSON AUDITORIUM LIGHTING PLAN
1/8" = 1'-0"

KEYNOTE LEGEND	
KEY	NOTE
E01	REMOVE EXISTING HOUSE LIGHTING FIXTURE REFLECTOR AND ELECTRICAL WHIP TO ALLOW FOR INSTALLATION OF NEW TYPE L2 LIGHT FIXTURE. EXISTING HOUSING INSTALLED WITHIN CEILING SHALL REMAIN FOR USE BY NEW RETROFIT LIGHT FIXTURE. PROVIDE NEW FIXTURE WHIP FROM NEARBY JUNCTION BOX FOR CONNECTION TO NEW LIGHT FIXTURE. MODIFY EXISTING WIRING TO BE SERVED FROM SINGLE 20A/1P CIRCUIT BREAKER. INSTALL NEW DMX CABLING PER LIGHTING CONTROL SYSTEM REQUIREMENTS, REFER TO DETAIL ON WER00. TYPICAL OF ALL TYPE L2 LIGHT FIXTURES SHOWN ON PLANS.
E07	COORDINATE EXACT PLACEMENT OF LIGHT FIXTURE AND ASSOCIATED SWITCH WITH OWNER PRIOR TO ROUGH-IN LIGHTING TO SERVE AS STAGE RUNNING LIGHT.
E09	SUSPEND TYPE L3 LIGHT FIXTURES APPROXIMATELY 5' FROM CEILING EXACT LOCATION AND SUSPENSION TO BE COORDINATED WITH EXISTING CONDITIONS. UTILIZE EXISTING CIRCUITING/CONTROLS SALVAGED FROM REMOVAL OF EXISTING LIGHTING AND EXTEND TO FIXTURE AS REQUIRED.
E10	REMOVE/REPAIR RECEPTACLE BACK BOX. PROVIDE NEW BOX AND RECEPTACLE. CONNECT TO EXISTING CIRCUITING.
E11	INSTALL NEW THEATRICAL RACEWAY CONNECTOR STRIP AND NEW STATIC RIGGING ASSEMBLY. SECURE THEATRICAL LIGHTING FIXTURES TO RACEWAY LIGHT PIPE. TYPICAL OF ALL RACEWAY STRIPS AND THEATRICAL LIGHTING FIXTURES. COORDINATE SUSPENSION HEIGHT OF RIGGING ASSEMBLY WITH OWNER. REFER TO LIGHTING CONTROL DIAGRAM FOR DMX CABLING REQUIREMENTS AND RIGGING SPECIFICATIONS FOR ADDITIONAL INFORMATION.
E12	RACEWAY LOCATED WITHIN AUDITORIUM CEILING OPENING. INSTALL NEW THEATRICAL RACEWAY CONNECTOR STRIP AND SECURE TO EXISTING RIGGING. SECURE THEATRICAL LIGHTING FIXTURES TO RACEWAY LIGHT PIPE. TYPICAL OF ALL THEATRICAL LIGHTING FIXTURES. REFER TO LIGHTING CONTROL DIAGRAM FOR DMX CABLING REQUIREMENTS.
E13	INSTALL ASSOCIATED CONTROL BOOTH RACEWAYS BELOW EXISTING PLYWOOD FLOORING TO BACK WALL AND TRANSITION TO ABOVE CEILING FOR CONTINUATION TO THEATRICAL CONTROL SYSTEM.

SHIVEHATTERY
ARCHITECTURE+ENGINEERING
2144 59th AVE WEST | BETTENDORF, IA 52722
309.764.7650 | www.shivehattery.com

Illinois | Indiana
Illinois Firm Number: 184-000214

SEAL

Matthew K. Gordon
062-069166
Expire: 11-30-2023

MCVSD MIDDLE SCHOOL AUDITORIUMS -
AUDITORIUM ELECTRICAL/RIGGING UPGRADES

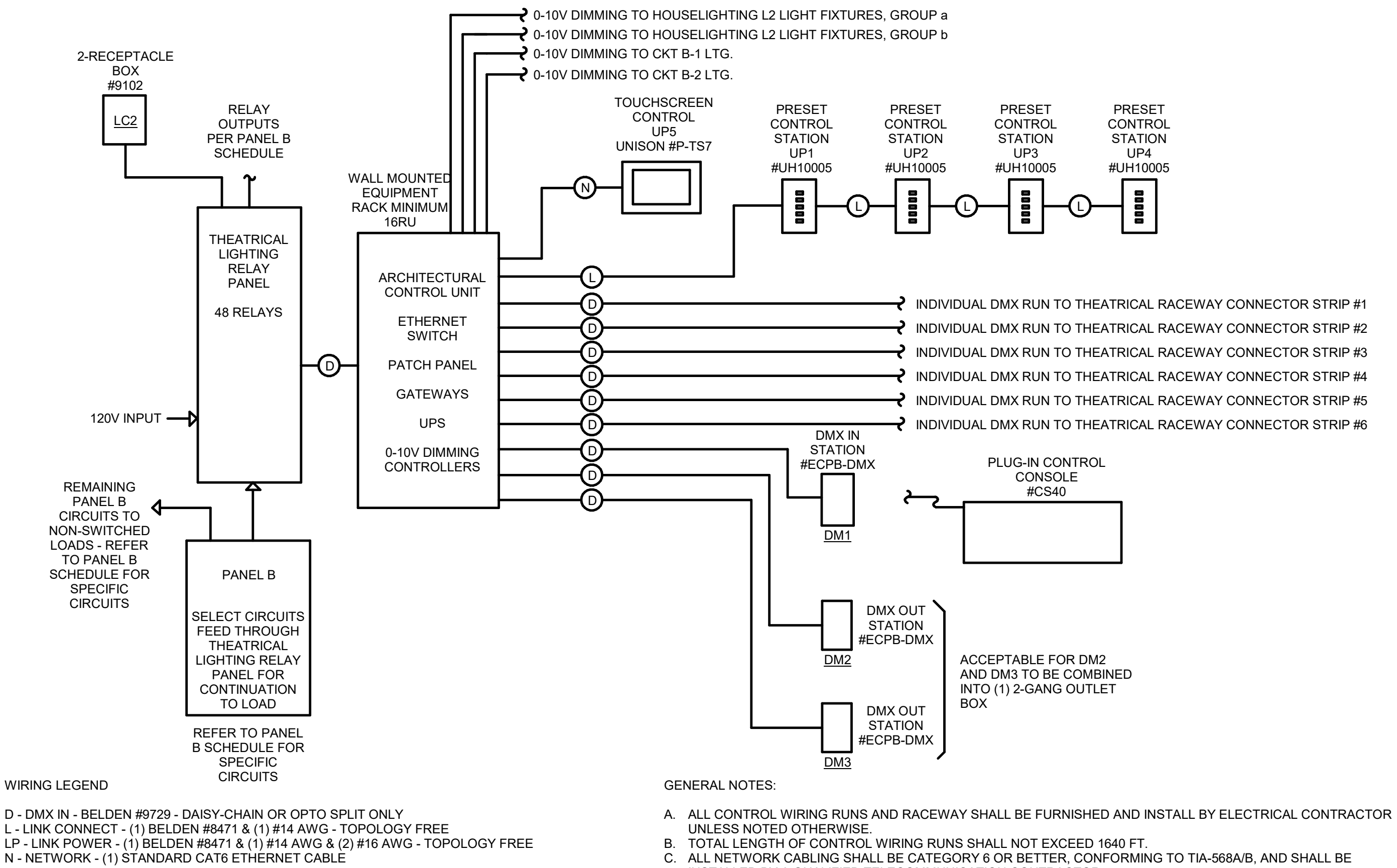
WILSON AUDITORIUM 1301 48TH ST., MOLINE IL 61265
JOHN DEERE AUDITORIUM 2035 11TH ST., MOLINE IL 61265

DRAWN: JRS	APPROVED: MKG
ISSUED FOR BID	DATE: 05/19/2023
PROJECT NO: 318442	FIELD BOOK:

WILSON
AUDITORIUM
ELECTRICAL
PLAN

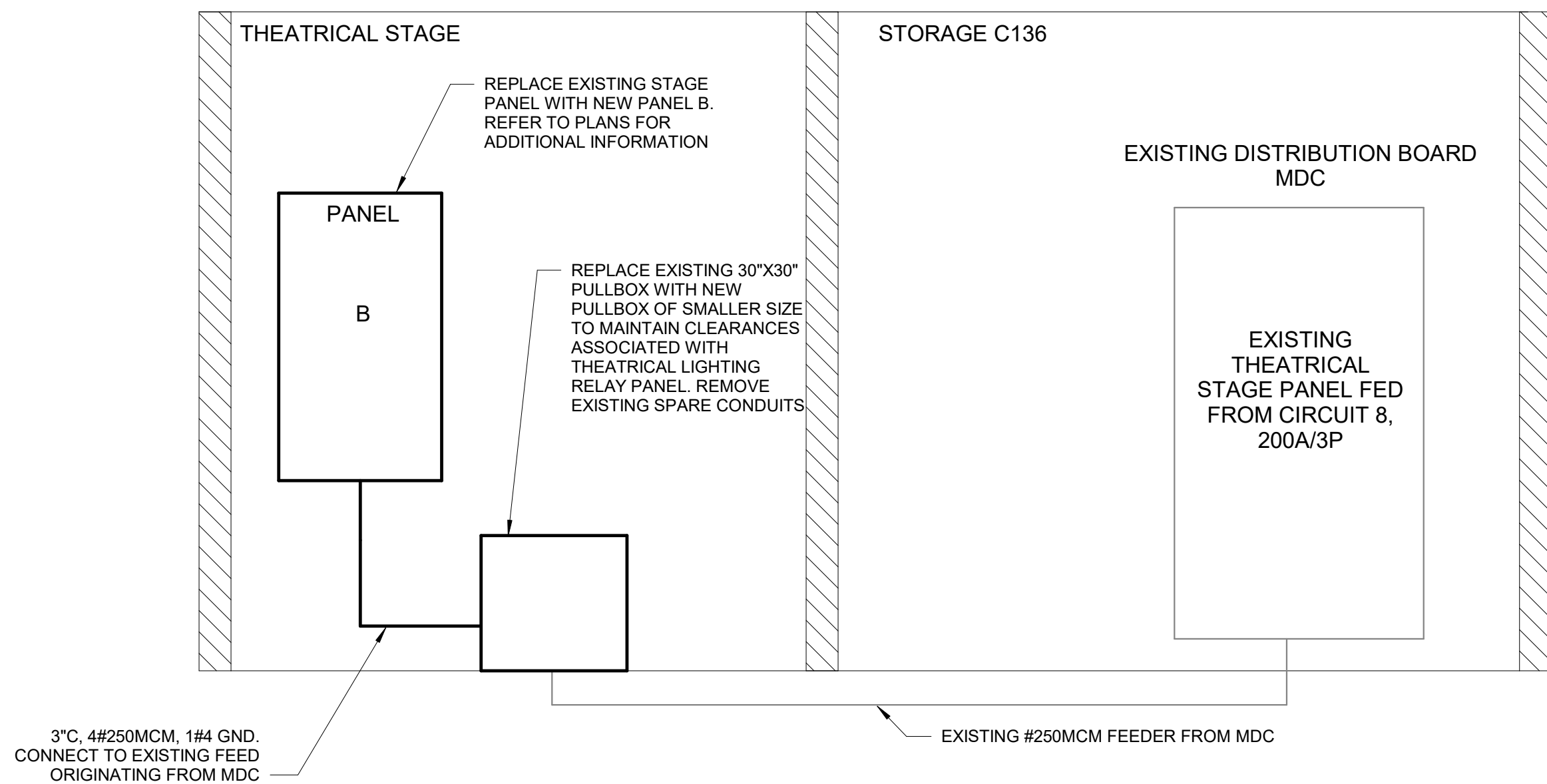
Printed: Autodesk Revit 2019

A B C D E F G H



1 THEATRICAL LIGHTING CONTROLS SCHEMATIC DIAGRAM

NOT TO SCALE



2 ELECTRICAL SCHEMATIC RISER DIAGRAM

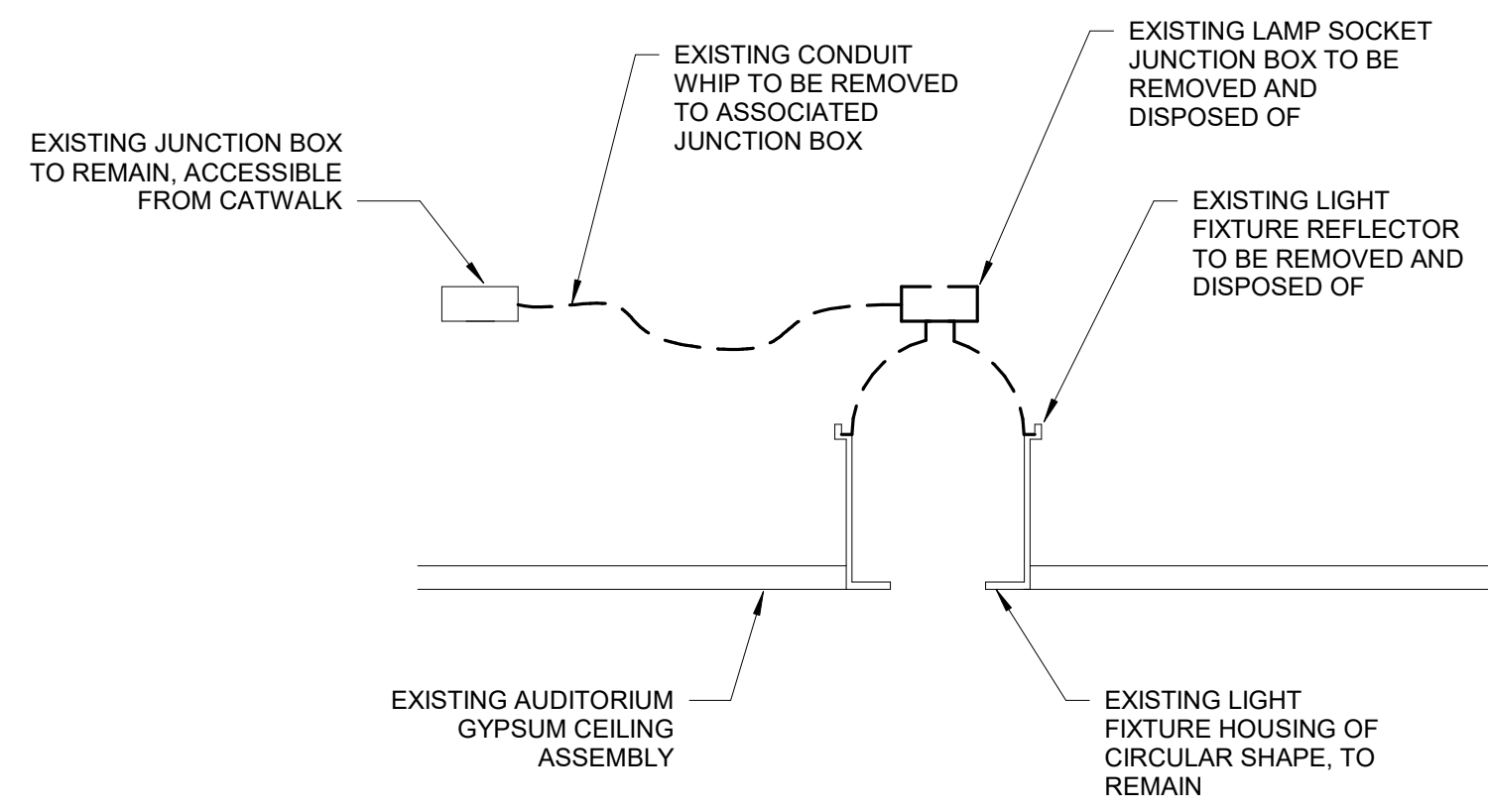
NOT TO SCALE



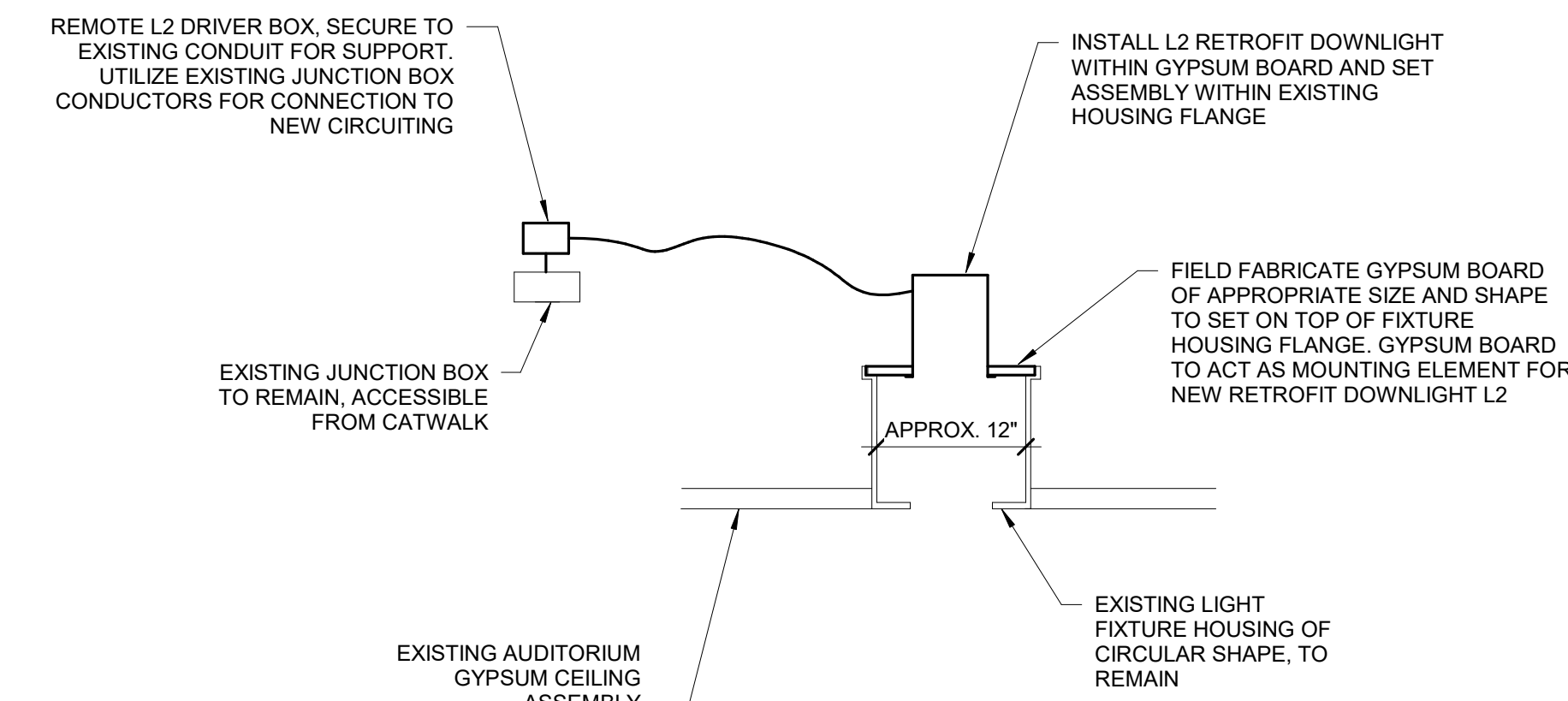
EXISTING DOWNLIGHT WITH REFLECTOR INSTALLED ON HOUSING FLANGE



EXISTING DOWNLIGHT HOUSING WITH REFLECTOR REMOVED



DEMOLITION DETAIL



RETROFIT INSTALLATION DETAIL

3 HOUSELIGHTING RETROFIT LIGHT FIXTURE L2 INSTALLATION DETAIL

NOT TO SCALE

A B C D E F G H

LIGHTING FIXTURE SCHEDULE									
CATALOG NUMBER SHALL NOT BE CONSIDERED COMPLETE AND MATERIAL SHALL NOT BE ORDERED BY MANUFACTURER AND CATALOG NUMBER ONLY. THE DESCRIPTION AND THE SPECIFICATIONS SHALL BE COORDINATED WITH THE CATALOG NUMBER TO DETERMINE THE EXACT MATERIAL AND ACCESSORIES TO BE ORDERED. THE FIRST MANUFACTURER LISTED IS THE BASIS FOR DESIGN. ALL LAMPS/LIGHT SOURCES FOR THIS PROJECT SHALL BE FURNISHED AND INSTALLED BY THE ELECTRICAL CONTRACTOR UNLESS OTHERWISE NOTED. ALL LIGHT FIXTURES SHALL BE PROVIDED WITH INTEGRAL DISCONNECT(S) FACTORY INSTALLED IN ACCORDANCE WITH NEC. REFER TO SPECIFICATIONS FOR SHOP DRAWING SUBMITTAL REQUIREMENTS AND ADDITIONAL INFORMATION.									
GENERAL NOTES:									
A. WHERE "OR APPROVED EQUIVALENT" IS LISTED IN THE MANUFACTURER COLUMN, FIXTURES MUST BE SUBMITTED AS A SUBSTITUTION FOR APPROVAL PRIOR TO BID SUBMISSION.									
B. LISTED LUMENS ARE DELIVERED LUMENS. PROVIDE FIXTURE WITHIN +/- 5% OF LISTED LUMENS.									
C. CONTRACTOR SHALL COORDINATE CEILING TYPES WITH GENERAL CONTRACTOR PRIOR TO ORDERING OF LIGHT FIXTURES. PROVIDE MOUNTING COMPONENTS AS REQUIRED BASED ON APPLICABLE CEILING TYPE.									
SCHEDULE NOTES:									
1. FURNISH WITH LED SCREW-IN LAMP, E26 BASE, MINIMUM 1000 LUMENS.									
2. REFER TO SPECIFICATIONS FOR FIXTURE REQUIREMENTS. FURNISH WITH MOUNTING PROVISIONS, POWER INPUT/OUTPUT CABLES, DIFFUSERS, AND ACCESSORIES REQUIRED FOR A COMPLETE INSTALLATION. FURNISH WITH NEW CLAMPS, SAFETY CABLES, AND RECOMMENDED LENSING.									
3. FURNISH (2) LED SCREW-IN LAMPS, CONFIRM SOCKET TYPE WITH EXISTING LUMINAIRE.									
4. FURNISH WITH CUSTOM LEAD LENGTH FROM LED MODULE TO REMOTE POWER SUPPLY TO BE 6' IN LENGTH.									
TYPE	DESCRIPTION	MTG	LIGHTING OUTPUT/CCT	VOLTAGE	WATTAGE	BASIS OF DESIGN			NOTES
L1	BLUE JELLY JAR LIGHT, CAST GUARD, LED FIXTURE	WALL	1000LM SCREW-IN LED LAMP	120	12	BARNLIGHT 100-NA-TGG-100-FSTBLUE-NA-E26-NA			1
L2	THEATRICAL DOWNLIGHT RETROFIT HOUSING, CUSTOM LEAD LENGTH FROM LED MODULE TO REMOTE POWER SUPPLY VOLTAGE DIMMING	RECESSED	6490 LUMENS, 2700K, 0-10V DIM TO DARK	120	60	METEOR RS6R-60-27R-120-LDE1-60-SSR			4
L3	4" INDUSTRIAL LED STRIPLIGHT, LENSED WITH REFLECTED UPLIGHT DISTRIBUTION WITH WIREGUARD	SURFACE/SUSPENDED	7000 LUMENS, 4000K, 0-10V 1% DIMMING	120	50	LITHONIA CLX-L48-7000LM-SEF-WDL-MVOLT-GZ1-40K-80CRI-WH-ZACFP120-WGLX48WH			
RL1	EXISTING WALL SCONCE, RELAMP ONLY	EXISTING	(2) 800 LUMEN, 2700K, LED SCREW-IN LAMP	120	12	EXISTING LUMINAIRE TO BE RELAMPED			3
T2	THEATRICAL SPOTLIGHT, 4-COLOR LIGHT ENGINE WITH DMX CONTROL	NEW RIGGING	DMX	120	166	ETC COLORSOURCE CSSPOTS SERIES WITH LENS TUBES, SAFETY CABLE, C-CLAMP, POWER CORD WITH EDISON CONNECTOR			2
T3	THEATRICAL WASHLIGHT WITH DMX CONTROL AND MEDIUM PAR SPREAD LENS	NEW RIGGING	DMX	120	90	ETC COLORSOURCE PAR SERIES WITH SAFETY CABLE, C-CLAMP, AND POWER CORD WITH EDISON CONNECTOR AND MEDIUM PAR LENS			2
T4	CYCLORAMA THEATRICAL WASHLIGHT WITH DMX CONTROL	NEW RIGGING	DMX	120	218	ETC COLORSOURCE CSLINEAR2 SERIES WITH SAFETY CABLE, C-CLAMP, AND POWER CORD WITH EDISON CONNECTOR			2
T5	THEATRICAL FOLLOWSPOT FIXTURE	TRIPOD	---	120	200	CANTOUSA CANTO ASTRO 600 SERIES			2

BRANCH PANEL NAME		VOLTAGE		PHASE	WIRE	BUS SIZE	MLO	AIC RATING				
B		120/208 Wye		3	4	225 AMPS	225	10,000 AMPS SYMMETRICAL				
ROOM:		MAIN CIRCUIT BREAKER PANELBOARD. LOCATE MAIN CIRCUIT BREAKER AT BOTTOM OF PANELBOARD LINEUP DUE TO FEEDER ENTERING BOTTOM OF PANELBOARD.						MOUNTING: SURFACE				
FED...								ENCLOSURE: NEMA 1				
FEED:												
LOAD	NOTE	POLE	BKR	CKT #	A	B	C	CKT #	POLE	NOTE	LOAD	
BACKSTAGE WORK LIGHTS	B	1	20	1	0.1 / 0.5			2	20	1	B	MIDFRNT STAGE WORK LTG
HOUSE WALL SCONCES	B	1	20	3		0.1 / 2.1		4	20	1	B	SEATING LIGHTING
THEATRICAL STRIP #1	B	1	20	5			0.6 / 0.6	6	20	1	B	THEATRICAL STRIP #1
THEATRICAL STRIP #1	B	1	20	7	0.6 / 0.6			8	20	1	B	THEATRICAL STRIP #1
THEATRICAL STRIP #1	B	1	20	9		0.6 / 0.6		10	20	1	B	THEATRICAL STRIP #1
THEATRICAL STRIP #2	B	1	20	11			0.3 / 0.3	12	20	1	B	THEATRICAL STRIP #2
THEATRICAL STRIP #2	B	1	20	13	0.3 / 0.3			14	20	1	B	THEATRICAL STRIP #2
THEATRICAL STRIP #2	B	1	20	15		0.3 / 0.3		16	20	1	B	THEATRICAL STRIP #2
THEATRICAL STRIP #3	B	1	20	17			0.3 / 0.3	18	20	1	B	THEATRICAL STRIP #3
THEATRICAL STRIP #3	B	1	20	19	0.3 / 0.3			20	20	1	B	THEATRICAL STRIP #3
THEATRICAL STRIP #3	B	1	20	21		0.3 / 0.3		22	20	1	B	THEATRICAL STRIP #3
THEATRICAL STRIP #4	B	1	20	23			0.3 / 0.3	24	20	1	B	THEATRICAL STRIP #4
THEATRICAL STRIP #4	B	1	20	25	0.3 / 0.3			26	20	1	B	THEATRICAL STRIP #4
THEATRICAL STRIP #4	B	1	20	27		0.3 / 0.3		28	20	1	B	THEATRICAL STRIP #4
HOUSE THEATRICAL #5	B	1	20	29			0.3 / 0.3	30	20	1	B	HOUSE THEATRICAL #6
HOUSE THEATRICAL #5	B	1	20	31	0.3 / 0.3			32	20	1	B	HOUSE THEATRICAL #6
LC2 BOOTH FOLLOW SPOT	B	1	20	33		0.2 / 0.0		34	20	1	B	LC2 BOOTH FOLLOW SPOT
THEAT. LTG. RELAY PNL	-	1	20	35			0.0 / 0.2	36	20	1	-	THEAT. LTG CONTROL RACK
BLUE LIGHT WORKLIGHTS	-	1	20	37	0.1 / 0.0			38	20	1	C	SPARE
SPARE	C	1	20	39		0.0 / 0.0		40	20	1	C	SPARE
SPARE	C	1	20	41			0.0 / 0.0	42	20	1	C	SPARE
SPARE	-	1	20	43	0.0 / 0.0			44	20	1	-	SPARE
SPARE	-	1	20	45		0.0 / 0.0		46	20	1	-	SPARE
SPARE	-	1	20	47			0.0 / 0.0	48	20	1	-	SPARE
SPARE	-	1	20	49	0.0 / 0.0			50	20	1	-	SPARE
SPARE	-	1	20	51		0.0 / 0.0		52	20	1	-	SPARE
SPARE	-	1	20	53			0.0 / 0.0	54	20	1	-	SPARE
TOTAL LOAD:		4286.5 VA		5385.8 VA		3798.8 VA						
TOTAL AMPS:		36.3 A		45.5 A		31.7 A						
Load Classification		Connected Load (VA)		Demand Factor		Estimated Demand (VA)		PANEL TOTALS				
LITES		13302		100.00%		13302		TOTAL CONN. LOAD: 13467.0 VA				
RCPT		180		100.00%		180		TOTAL EST. DEMAND: 13467.0 VA				
SPEC		0		0.00%		0		TOTAL CONN. CURRENT: 37.4 A				
								TOTAL EST. DEMAND... 37.4 A				
Notes:												
B. LOAD CONTROLLED THROUGH THEATRICAL RELAY PANEL. EXTEND NEW CIRCUITING THROUGH RELAY PANEL FOR CONTINUATION TO LOAD.												
C. EXISTING CIRCUIT IS NOT LABELED ON EXISTING PANEL DIRECTORY. LOAD UNKNOWN. IF FOUND TO BE AN EXISTING LOAD CONNECT, SPICE/EXTEND TO PANEL B FOR UNSWITCHED POWER. UTILIZE SPARE CIRCUIT BREAKER. IF NO LOAD IS FOUND ON CIRCUIT, LABEL BREAKER AS SPARE.												

SHIVEHATTERY
ARCHITECTURE+ENGINEERING
2144 59th AVE WEST | BETTENDORF, IA 52722
309.764.7650 | www.shivehattery.com
Iowa | Illinois | Indiana
Illinois Firm Number: 184-000214

SEAL
LICENSED PROFESSIONAL ENGINEER
Matthew K. Gordon
062-069166
STATE OF ILLINOIS
Expires: 11-30-2023

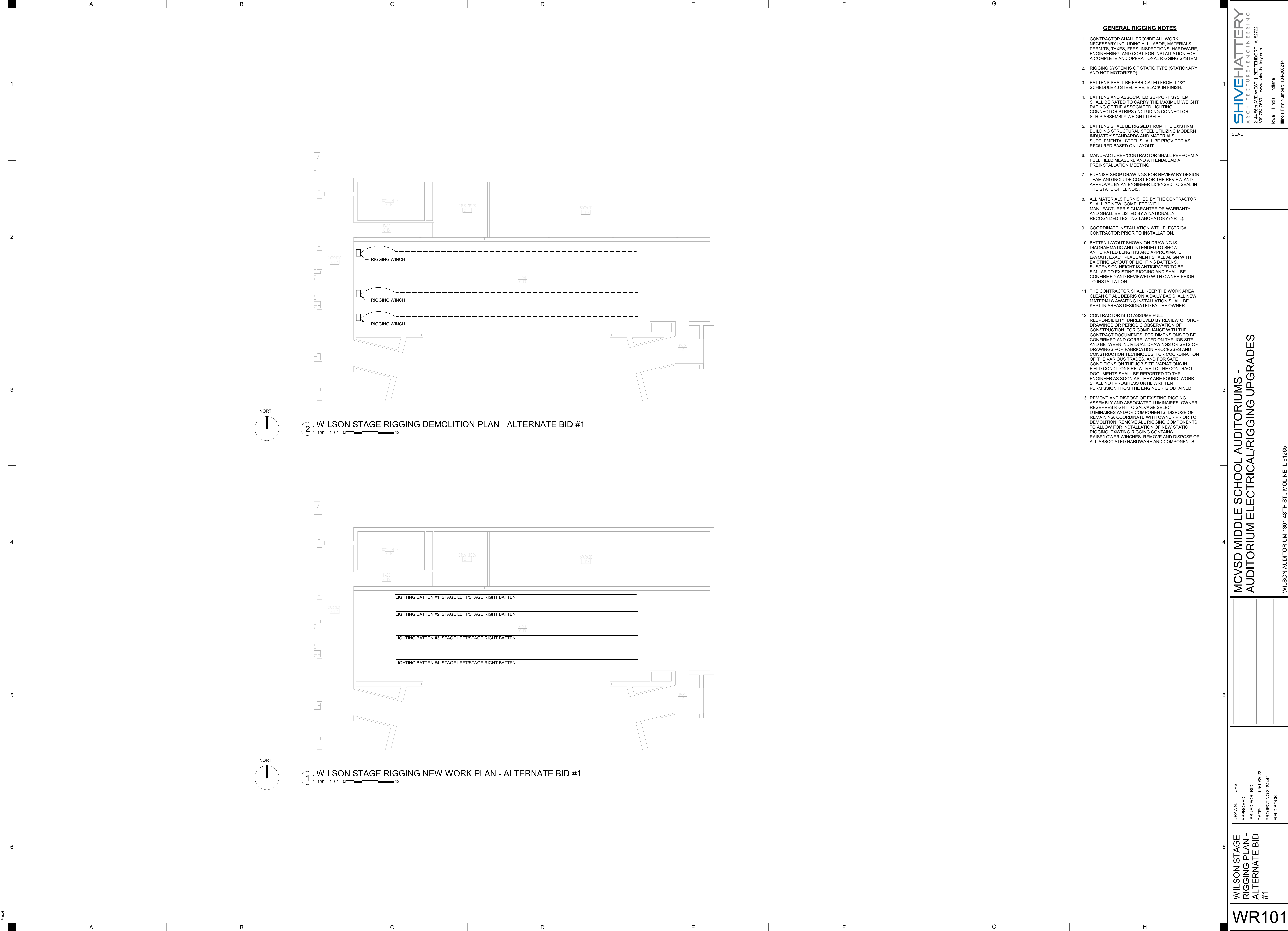
MCVSD MIDDLE SCHOOL AUDITORIUMS - AUDITORIUM ELECTRICAL/RIGGING UPGRADES

WILSON AUDITORIUM 1301 48TH ST., MOLINE IL 61265
JOHN DEERE AUDITORIUM 2035 11TH ST., MOLINE IL 61265

DRAWN: JRS
APPROVED: MKG
ISSUED FOR BID
DATE: 05/19/2023
PROJECT NO: 318442
FIELD BOOK:

WILSON
ELECTRICAL
SCHEDULES AND
DETAILS

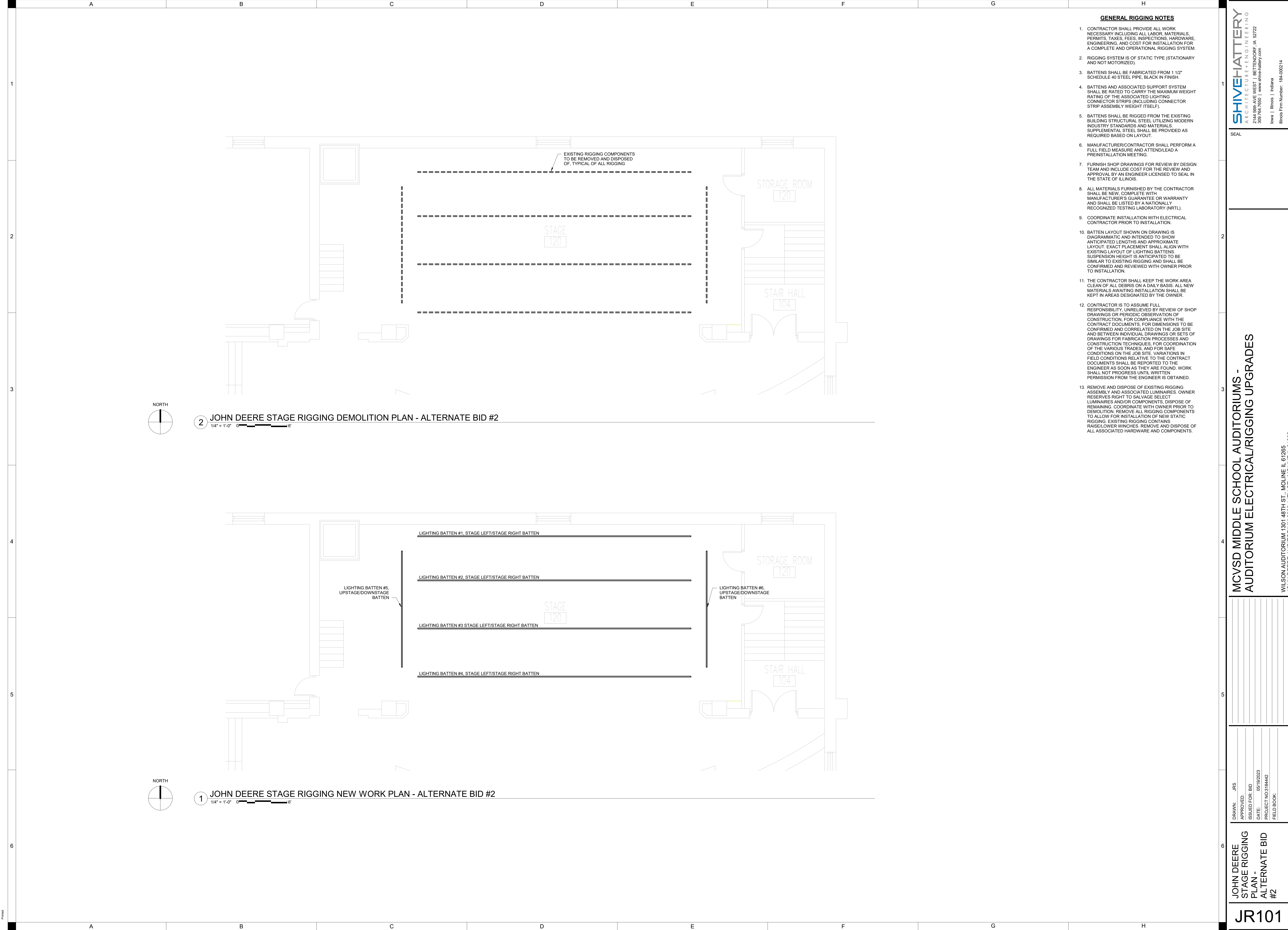
WE500



GENERAL RIGGING NOTES

1. CONTRACTOR SHALL PROVIDE ALL WORK NECESSARY INCLUDING ALL LABOR, MATERIALS, PERMITS, TAXES, FEES, INSPECTIONS, HARDWARE, ENGINEERING, AND COST FOR INSTALLATION FOR A COMPLETE AND OPERATIONAL RIGGING SYSTEM.
2. RIGGING SYSTEM IS OF STATIC TYPE (STATIONARY AND NOT MOTORIZED).
3. BATTENS SHALL BE FABRICATED FROM 1 1/2" SCHEDULE 40 STEEL PIPE, BLACK IN FINISH.
4. BATTENS AND ASSOCIATED SUPPORT SYSTEM SHALL BE RATED TO CARRY THE MAXIMUM WEIGHT RATING OF THE ASSOCIATED LIGHTING CONNECTOR STRIPS (INCLUDING CONNECTOR STRIP ASSEMBLY WEIGHT ITSELF).
5. BATTENS SHALL BE RIGGED FROM THE EXISTING BUILDING STRUCTURAL STEEL UTILIZING MODERN INDUSTRY STANDARDS AND MATERIALS. SUPPLEMENTAL STEEL SHALL BE PROVIDED AS REQUIRED BASED ON LAYOUT.
6. MANUFACTURER/CONTRACTOR SHALL PERFORM A FULL FIELD MEASURE AND ATTEND/LEAD A PREINSTALLATION MEETING.
7. FURNISH SHOP DRAWINGS FOR REVIEW BY DESIGN TEAM AND INCLUDE COST FOR THE REVIEW AND APPROVAL BY AN ENGINEER LICENSED TO SEAL IN THE STATE OF ILLINOIS.
8. ALL MATERIALS FURNISHED BY THE CONTRACTOR SHALL BE NEW, COMPLETE WITH MANUFACTURER'S GUARANTEE OR WARRANTY AND SHALL BE LISTED BY A NATIONALLY RECOGNIZED TESTING LABORATORY (NRTL).
9. COORDINATE INSTALLATION WITH ELECTRICAL CONTRACTOR PRIOR TO INSTALLATION.
10. BATTEN LAYOUT SHOWN ON DRAWING IS DIAGRAMMATIC AND INTENDED TO SHOW ANTICIPATED LENGTHS AND APPROXIMATE LAYOUT. EXACT PLACEMENT SHALL ALIGN WITH EXISTING LAYOUT OF LIGHTING BATTENS. SUSPENSION HEIGHT IS ANTICIPATED TO BE SIMILAR TO EXISTING RIGGING AND SHALL BE CONFIRMED AND REVIEWED WITH OWNER PRIOR TO INSTALLATION.
11. THE CONTRACTOR SHALL KEEP THE WORK AREA CLEAN OF ALL DEBRIS ON A DAILY BASIS. ALL NEW MATERIALS AWAITING INSTALLATION SHALL BE KEPT IN AREAS DESIGNATED BY THE OWNER.
12. CONTRACTOR IS TO ASSUME FULL RESPONSIBILITY, UNRELIEVED BY REVIEW OF SHOP DRAWINGS OR PERIODIC OBSERVATION OF CONSTRUCTION, FOR COMPLIANCE WITH THE CONTRACT DOCUMENTS, FOR DIMENSIONS TO BE CONFIRMED AND CORRELATED ON THE JOB SITE AND BETWEEN INDIVIDUAL DRAWINGS OR SETS OF DRAWINGS FOR FABRICATION PROCESSES AND CONSTRUCTION TECHNIQUES. FOR COORDINATION OF THE VARIOUS TRADES, AND FOR SAFE CONDITIONS ON THE JOB SITE. VARIATIONS IN FIELD CONDITIONS RELATIVE TO THE CONTRACT DOCUMENTS SHALL BE REPORTED TO THE ENGINEER AS SOON AS THEY ARE FOUND. WORK SHALL NOT PROGRESS UNTIL WRITTEN PERMISSION FROM THE ENGINEER IS OBTAINED.
13. REMOVE AND DISPOSE OF EXISTING RIGGING ASSEMBLY AND ASSOCIATED LUMINAIRES. OWNER RESERVES RIGHT TO SALVAGE SELECT LUMINAIRES AND/OR COMPONENTS, DISPOSE OF REMAINING. COORDINATE WITH OWNER PRIOR TO DEMOLITION. REMOVE ALL RIGGING COMPONENTS TO ALLOW FOR INSTALLATION OF NEW STATIC RIGGING. EXISTING RIGGING CONTAINS RAISE/LOWER WINCHES. REMOVE AND DISPOSE OF ALL ASSOCIATED HARDWARE AND COMPONENTS.

SEAL



GENERAL RIGGING NOTES

- CONTRACTOR SHALL PROVIDE ALL WORK NECESSARY INCLUDING ALL LABOR, MATERIALS, PERMITS, TAXES, FEES, INSPECTIONS, HARDWARE, ENGINEERING, AND COST FOR INSTALLATION FOR A COMPLETE AND OPERATIONAL RIGGING SYSTEM.
- RIGGING SYSTEM IS OF STATIC TYPE (STATIONARY AND NOT MOTORIZED).
- BATTENS SHALL BE FABRICATED FROM 1 1/2" SCHEDULE 40 STEEL PIPE, BLACK N FINISH.
- BATTENS AND ASSOCIATED SUPPORT SYSTEM SHALL BE RATED TO CARRY THE MAXIMUM WEIGHT RATING OF THE ASSOCIATED LIGHTING CONNECTOR STRIPS (INCLUDING CONNECTOR STRIP ASSEMBLY WEIGHT ITSELF).
- BATTENS SHALL BE RIGGED FROM THE EXISTING BUILDING STRUCTURAL STEEL UTILIZING MODERN INDUSTRY STANDARDS AND MATERIALS. SUPPLEMENTAL STEEL SHALL BE PROVIDED AS REQUIRED BASED ON LAYOUT.
- MANUFACTURER/CONTRACTOR SHALL PERFORM A FULL FIELD MEASURE AND ATTEND/LEAD A PREINSTALLATION MEETING.
- FURNISH SHOP DRAWINGS FOR REVIEW BY DESIGN TEAM AND INCLUDE COST FOR THE REVIEW AND APPROVAL BY AN ENGINEER LICENSED TO SEAL IN THE STATE OF ILLINOIS.
- ALL MATERIALS FURNISHED BY THE CONTRACTOR SHALL BE NEW, COMPLETE WITH MANUFACTURER'S GUARANTEE OR WARRANTY AND SHALL BE LISTED BY A NATIONALLY RECOGNIZED TESTING LABORATORY (NRTL).
- COORDINATE INSTALLATION WITH ELECTRICAL CONTRACTOR PRIOR TO INSTALLATION.
- BATTEN LAYOUT SHOWN ON DRAWING IS DIAGRAMMATIC AND INTENDED TO SHOW ANTICIPATED LENGTHS AND APPROXIMATE LAYOUT. EXACT PLACEMENT SHALL ALIGN WITH EXISTING LAYOUT OF LIGHTING BATTENS. SUSPENSION HEIGHT IS ANTICIPATED TO BE SIMILAR TO EXISTING RIGGING AND SHALL BE CONFIRMED AND REVIEWED WITH OWNER PRIOR TO INSTALLATION.
- THE CONTRACTOR SHALL KEEP THE WORK AREA CLEAN OF ALL DEBRIS ON A DAILY BASIS. ALL NEW MATERIALS AWAITING INSTALLATION SHALL BE KEPT IN AREAS DESIGNATED BY THE OWNER.
- CONTRACTOR IS TO ASSUME FULL RESPONSIBILITY, UNRELIEVED BY REVIEW OF SHOP DRAWINGS OR PERIODIC OBSERVATION OF CONSTRUCTION, FOR COMPLIANCE WITH THE CONTRACT DOCUMENTS, FOR DIMENSIONS TO BE CONFIRMED AND CORRELATED ON THE JOB SITE AND BETWEEN INDIVIDUAL DRAWINGS OR SETS OF DRAWINGS FOR FABRICATION PROCESSES AND CONSTRUCTION TECHNIQUES, FOR COORDINATION OF THE VARIOUS TRADES, AND FOR SAFE CONDITIONS ON THE JOB SITE. VARIATIONS IN FIELD CONDITIONS RELATIVE TO THE CONTRACT DOCUMENTS SHALL BE REPORTED TO THE ENGINEER AS SOON AS THEY ARE FOUND. WORK SHALL NOT PROGRESS UNTIL WRITTEN PERMISSION FROM THE ENGINEER IS OBTAINED.
- REMOVE AND DISPOSE OF EXISTING RIGGING ASSEMBLY AND ASSOCIATED LUMINAIRES. OWNER RESERVES RIGHT TO SALVAGE SELECT LUMINAIRES AND/OR COMPONENTS. DISPOSE OF REMAINING. COORDINATE WITH OWNER PRIOR TO DEMOLITION. REMOVE ALL RIGGING COMPONENTS TO ALLOW FOR INSTALLATION OF NEW STATIC RIGGING. EXISTING RIGGING CONTAINS RAISE/LOWER WINCHES. REMOVE AND DISPOSE OF ALL ASSOCIATED HARDWARE AND COMPONENTS.

SEAL